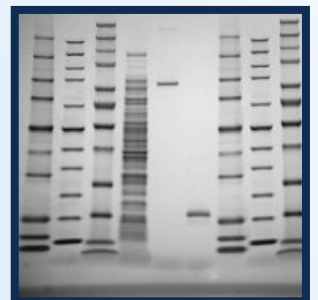


Solutions for Protein Electrophoresis

Lonza

- | PAGEr™ EX Gels for Protein Analysis |
- | PAGEr™ EX Staining Kit |
- | PAGEr™ EX Transfer Kit |
- | ProSieve™ Blue Protein Stain |
- | ProSieve™ Protein Coloured and Unstained Markers |



Protein Electrophoresis

Lonza introduces novel products for fast protein separation on polyacrylamide precast gels and subsequent staining of the proteins or rapid tank transfer for western blotting. Combined they take standard protein methods from over 5 hours down to less than 1 hour:

- 20-25 minutes separation with PAGEr™ EX Gels and ProSieve™ EX Running Buffer and gels have a 1 year shelf-life
- 10 minutes transfer/Western blot using ProSieve™ EX Western Blot Transfer Buffer
- 10 minutes staining using ProSieve™ EX Safe Stain

PAGEr™ EX Gels for Protein Analysis

PAGEr™ EX Gels are completely redesigned with new faster and longer shelf formulations, simplifying the full protein separation range offering, easier to choose from and compatible for with a wide range of chambers.



PAGEr™ EX Gels Performance & Specifications:

Separation	Equivalent Concentrations	Well Format	Dimensions	Buffer	Chambers
Mid/High range 10-350 kDa	4-12%	12 well or 16 well	9 X 10cm or 10 X 10cm	ProSieve™ EX running buffer	Most standard protein chambers
Low/Mid range 5-225 kDa	10%				

PAGEr™ EX Staining Kit

NEW PAGEr™ EX Protein Staining Kits are designed for separation and staining in less than 30 minutes.

ProSieve™ EX Safe Stain is the ultimate fast and safe, one step process that will accelerate your staining beyond the traditional methods

ProSieve™ EX Stain Enhancer is a coomassie stain enhancer that will accelerate staining to 15 minutes, and improve band intensity

These all-in-one kits consist of:

- 2 PAGEr™ EX Gels
- 100 ml ProSieve™ EX Running Buffer
- 25 ml ProSieve™ EX Safe Stain
- 50 µl ProSieve™ Quad Color Marker



PAGEr™ EX Transfer Kit

NEW PAGEr™ EX Protein Transfer/Western Blot Kits are designed for separation and transfer in less than 30 minutes.

- 20 minute run/separation
- 10 minute protein transfer

Protein Transfer Kits consists of:

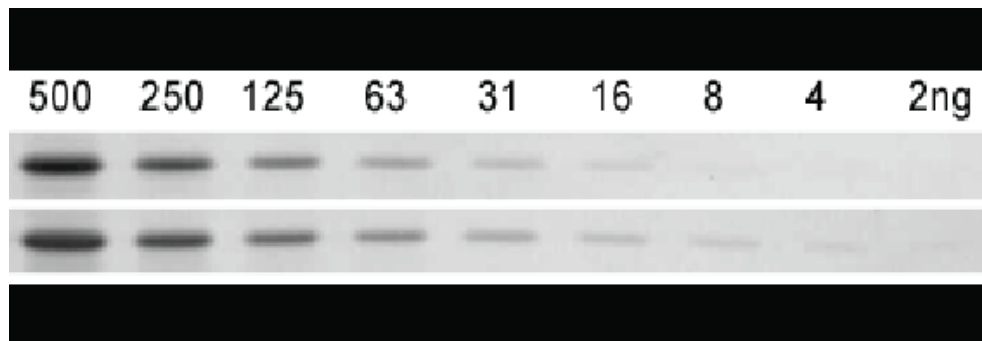
- 2 PAGEr™ EX Gels
- 100 ml ProSieve™ EX Running Buffer
- 100 ml ProSieve™ EX Western Blot/Transfer Buffer
- 50 µl ProSieve™ Quad Color Marker



ProSieve™ Blue Protein Stain

ProSieve™ Blue Protein Staining Solution is a ready to use solution for fast and sensitive staining of proteins separated in polyacrylamide gels or PVDF membranes. ProSieve™ Blue Protein Staining Solution is based on the Coomassie Brilliant Blue G-250 dye. Proteins are stained to an endpoint, therefore over-staining does not occur, even after overnight staining.

The linear dynamic range of ProSieve™ Blue extends over two orders of magnitude (5-500 ng) and is about 10 times more sensitive than traditional Coomassie Brilliant Blue R250. ProSieve™ Blue Protein Staining Solution does not contain methanol or acetic acid and can be reused up to three times without any loss in sensitivity.



Comparison of detection sensitivity between standard colloidal stain (upper bands) and ProSieve Blue Protein Staining Solution (lower bands).

- Ready-to-use & Easy-to-use- simply soak the gel in the solution and observe stained bands
- No destaining required
- Safe- does not contain methanol or acetic acid
- End point stain- cannot overstain even after overnight incubation
- Highly sensitive- detects 2-5 ng protein
- More sensitive than Coomassie Brilliant Blue R-250 Broad linear dynamic range
- Fast- 25-40 minute protocol
- Compatible with mass spectrometry silver staining PVDF membranes
- Cost efficient- can be reused up to 3 times

ProSieve™ Protein Coloured and Unstained Markers

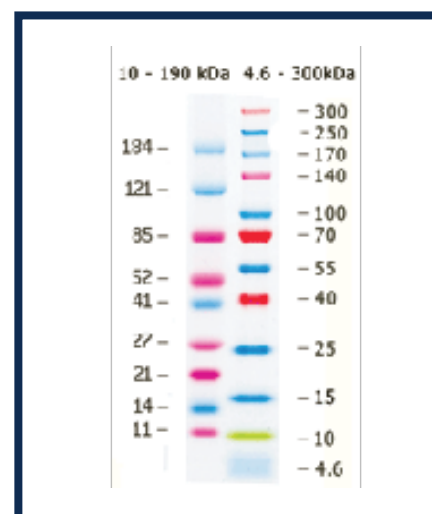
The **ProSieve™ Color Protein Markers** contain sets of proteins and dyes for use as visible markers in SDS-PAGE gels. During electrophoresis, these markers help monitor the efficiency of separation. In Western blotting, they confirm transfer has occurred from the gel to the membrane.

- **ProSieve™ Color Protein Marker, 10-190 kDa**

The proteins in the ProSieve™ Color Protein Marker have been labelled with 3 different fluorescent dyes. The ProSieve™ Color Protein Marker contains 9 proteins with approximate masses of 10, 15, 20, 25, 40, 50, 80, 125, and 190 kDa.

- **ProSieve™ QuadColor™ Protein Marker, 4.6-300 kDa**

The ProSieve™ QuadColor™ Protein Marker is a mixture of 12 recombinant, highly purified proteins with molecular weights of 4, 6, 10, 15, 25, 40, 55, 70, 100, 140, 170, 250, and 300 kDa. The proteins are individually prestained using four different dyes. The ProSieve™ QuadColor™ Protein Marker is ready-to-use



ProSieve™ Unstained Protein Markers are designed for sharp and accurate sizing of proteins in SDS-polyacrylamide gel electrophoresis, as well as on PVDF, nylon and nitrocellulose membranes. Each protein in both markers contains an integral Strep-tag® II sequence which can be detected directly on Western blots using a Strep-Tactin®-AP* conjugate or an antibody against Strep-tag® II.

- **ProSieve™ Unstained Protein Marker, 5-225kDa**

ProSieve™ Unstained Protein Marker consists of a novel set of proteins designed for accurate sizing of protein samples in SDS-PAGE. The marker contains 10 proteins with exact masses of 5, 10, 15, 25, 35, 50, 75, 100, 150, and 225kDa. The 50 kDa band is double-intensity for easy identification.

- **ProSieve™ Unstained Protein Marker II, 10- 200 kDa**

The ProSieve™ Unstained Protein Marker II is a mixture of 11 recombinant, highly purified, unstained proteins. The exact masses of the proteins in this marker are 10, 15, 20, 30, 40, 50, 70, 100, 120, 150, and 200 kDa. The 50 kDa band is higher intensity for easier identification

