

**Lonza**

## FlashGel™ System for DNA, RNA & Recovery

- 5 minute separation and recovery
- See bands in as little as 2 minutes
- Recover samples directly, without UV light, band excision or purification
- Real-time separation and documentation
- Watch band migration as it happens
- Photograph gels at the bench, without DNA damaging UV light
- Outstanding sensitivity and resolution



# FlashGel System

The FlashGel™ System provides complete separation, recovery and documentation safely in just minutes.

## Choose 1 of 6 families:

- FlashGel™ Camera
- FlashGel™ Power Supply
- FlashGel™ DNA System
- FlashGel™ RNA System
- FlashGel™ Recovery System
- FlashGel™ Molecular Weight Standards



The FlashGel™ System gets straight to your results. Simply load samples, watch bands migrate and get data in as little as 2 minutes. Say goodbye to gel preparation, band excision, purification, and UV light. Complete separation, recovery and documentation safely, at the bench, in minutes.

The FlashGel™ System consists of enclosed, disposable, precast agarose gel cassettes and a combination electrophoresis and transilluminator unit.

- 5 – 20 times more sensitive than ethidium bromide; detect <0.1 ng DNA or <10 ng total RNA
- Clean, sharp separation and straight, uniform sample lanes.
- FlashGel™ Cassettes contain precast, pre-stained agarose gel and buffer – no need for gel preparation, buffer addition or gel staining.
- The FlashGel™ Dock is an electrophoresis apparatus with a built-in transilluminator that provides both separation and detection.
- The FlashGel™ Camera is a compact camera system designed to photograph FlashGel™ Cassettes right at the bench.
- The FlashGel™ Power Supply is a high voltage electrophoresis power supply designed for the FlashGel™ Dock.
- FlashGel™ Markers are recommended for best performance.

# FlashGel™ Camera

Capture data from the FlashGel™ System and say goodbye to darkrooms and UV light. Complete separation and documentation safely, at your bench, in minutes. This simple digital camera in an enclosed hood connects directly to your laptop or PC via USB cable.

## The FlashGel™ Camera offers:

- Sharp, clear, high resolution images
- Simple user interface
- Small compact design



Cat #	Description
57040	FlashGel™ Camera
57065	The FlashGel™ Camera Pack contains a FlashGel™ Dock and a FlashGel™ Camera
57067	The FlashGel™ System contains a FlashGel™ Dock, FlashGel™ Camera, a pack of 1.2% DNA Cassettes, Loading dye and Marker
57062	The FlashGel™ Device Pack contains a FlashGel™ Dock, FlashGel™ Camera and FlashGel™ Power Supply

# FlashGel™ Power Supply

Designed to complement the FlashGel™ Dock, this new power supply boasts of simple program settings and is half the size of other standard power supply units. This 300 volt FlashGel™ Power Supply is capable of powering most standard horizontal and vertical electrophoresis systems.

## The FlashGel™ Power Supply Offers

- Compact size
- Simple easy-to-use interface
- Multiple jacks to run up to two FlashGel™ Docks at once
- Built-in timer
- Easy to read digital display
- Toggle between volts, current, and time



Cat #	Description
57068	FlashGel™ Power Supply
57069	The FlashGel™ Power Supply Pack contains a FlashGel™ Dock and FlashGel™ Power Supply

# FlashGel™ DNA System

## 5 minute DNA analysis

The FlashGel™ System is the fastest way to separate DNA and the only way to watch DNA migration as it happens. This revolutionary new tool separates DNA in 2 - 7 minutes. Monitor gel runs right at the bench, without UV light. The highly sensitive system allows a 5-20X reduction in DNA levels - saving both time and money.

- Get results in 5 minutes or less.
- Watch DNA migrate at your bench, in real-time without UV light.
- Enjoy outstanding resolution and exquisite sensitivity.

**The FlashGel™ System** consists of enclosed, disposable, precast agarose gel cassettes and a combination electrophoresis and transilluminator unit.

- FlashGel™ Cassettes contain precast, prestained agarose gels and buffer - no need for gel preparation, buffer addition or gel staining.
- The FlashGel™ Dock is an electrophoresis apparatus with a built-in transilluminator that provides both separation and detection.

**The FlashGel™ DNA Kit** (Cat. No. 57063) contains a pack of 1.2% DNA Cassettes, Loading dye and Marker.

**The FlashGel™ DNA Starter Kit** (Cat. No. 57026) contains a FlashGel™ Dock, a pack of 1.2% DNA Cassettes, Loading dye and Marker.

**The FlashGel™ System** (Cat. No. 57067) contains a FlashGel™ Dock, a FlashGel™ Camera, a pack of 1.2% DNA Cassettes, Loading dye and Marker.

Cat #	Description
57026	FlashGel™ DNA Starter Kit
57063	FlashGel™ DNA Kit
57023	FlashGel™ DNA Cassette, 1.2%, 12+1 well, single tier
57031	FlashGel™ DNA Cassette, 2.2%, 12+1 well, single tier
57029	FlashGel™ DNA Cassette, 1.2%, 16+1 well, double tier
57032	FlashGel™ DNA Cassette, 2.2%, 16+1 well, double tier
50473	FlashGel™ DNA Marker, 100bp-4kb, 500µl
50475	FlashGel™ DNA QuantLadder 100, 100bp-1500bp, 250µl
57034	FlashGel™ DNA Marker, 100bp-3kb, 500µl
57033	FlashGel™ DNA Marker, 50bp-1.5kb, 500µl
50462	FlashGel™ Loading Dye 5 x 1ml, 5X concentrate
57025	FlashGel™ Dock System
57067	FlashGel™ System



# FlashGel™ RNA System

## Rapid, sensitive, convenient RNA analysis

The FlashGel™ System for RNA is optimized for the unique requirements of RNA, and is a fast and sensitive tool for analysis of sample integrity. The system is recommended for verification and analysis of total RNA, quick checks of native RNA, and checking RNA degradation and mRNA purity.

## Rapid procedure

RNA fragments are analyzed on The FlashGel™ System using the same fast and simple procedure used for DNA. Separation is complete in <8 minutes and RNA samples are ready for imaging within 10-20 minutes.

## Exquisitely sensitive detection

The FlashGel™ System for RNA is 5-20X more sensitive than ethidium bromide gels. RNA <10 ng per band are clearly detected, conserving precious RNA samples.

## Clean, enclosed system

FlashGel™ RNA Cassettes fully enclose the gel, stain and running buffer, protecting samples from contaminating RNases. RNA cassettes are designed for performance and purity, and are guaranteed RNase free. The FlashGel™ Dock provides electrophoresis and visualization of both DNA and RNA cassettes.

Cat #	Description
57024	FlashGel™ RNA Kit contains a pack of 1.2% RNA Cassettes, Formaldehyde Sample Buffer, RNA Marker and Molecular Biology Grade Water
57027	FlashGel™ RNA Cassette, 1.2%, 12+1 well, single tier
57028	FlashGel™ RNA Cassette, 1.2%, 16+1 well, double tier
50577	FlashGel™ RNA Marker 0.5 kb - 9 kb
50571	Formaldehyde Sample Buffer - 5 x 1ml
57025	FlashGel™ Dock System



# FlashGel™ Recovery System

Direct DNA recovery using The FlashGel™ Recovery System eliminates agarose gel preparation, band excision and purification. The system delivers highly efficient recovery, free from inhibitors and UV-induced damage, in a simple 5-10 minute protocol.

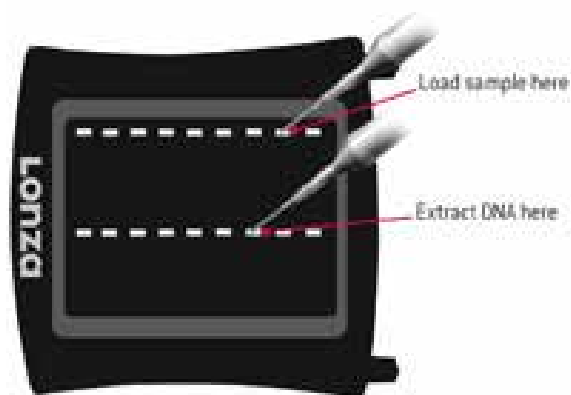
- Go from sample loading to recovery in just 5 minutes
- Recover samples directly from the cassette, without band excision or purification
- Visualize sample recovery at the bench, without UV light
- Recover at 80% - 100% efficiency

## Fast simple procedure

1. Load samples in top tier of wells
2. Run until band of interest almost reaches the second tier of wells (2-5 minutes)
3. Stop the run and add FlashGel™ Recovery Buffer. Start and run band into the well
4. Stop the run and remove the DNA from the well(s)

The FlashGel™ Recovery System eliminates the need to cut away and then purify bands. As DNA migrates to the second tier of wells, it is free from the agarose matrix and easily extracted via pipette, with the aid of the FlashGel™ Recovery Buffer. Samples are recovered at 80% - 100% efficiency, free from inhibitors and ready for subsequent re-amplification, cloning or other techniques, without additional purification steps.

Cat #	Description
57064	FlashGel™ Recovery Kit contains FlashGel™ Recovery Cassettes 1.2%, 8+1 double tier well (9 pk), FlashGel™ Loading dye, FlashGel™ Recovery Buffer, FlashGel™ QuantLadder, Visualization Glasses and FlashGel™ Mask
57051	FlashGel™ Recovery, 1.2%, 8+1 well, double tier
57022	FlashGel™ System, 2.2%, 8+1 two tier well format
50560	FlashGel™ Recovery Buffer
50561	FlashGel™ Visualization Glasses
57025	FlashGel™ Dock System



# FlashGel™ Molecular Weight Standards

FlashGel™ Markers and Ladders were designed to optimize performance of the FlashGel™

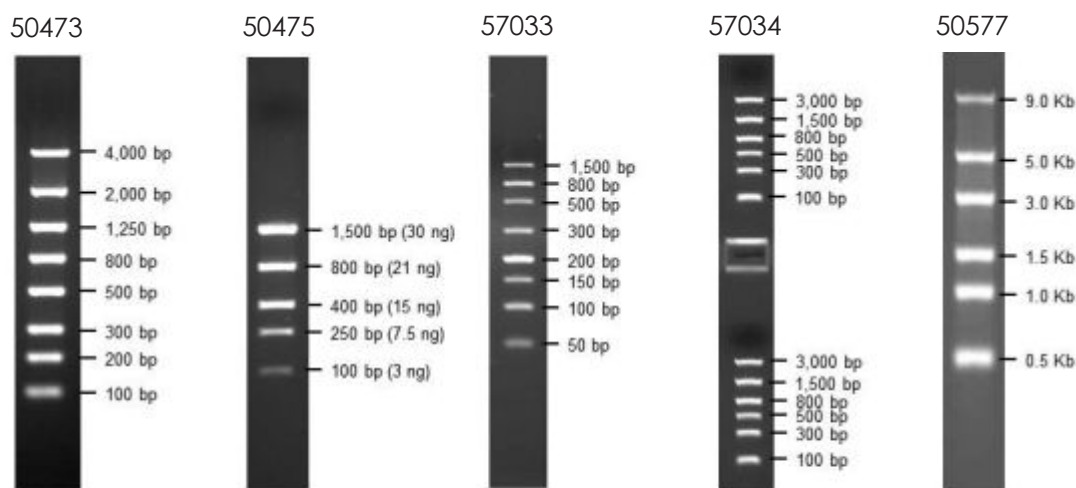
## FlashGel™ DNA Markers & Ladders

- Provide accurate size estimation of DNA fragments
- Quant ladder enables both size and quantity estimation
- Provided ready-to-load

## FlashGel™ RNA Marker

- Denature with Formaldehyde sample Buffer (Cat # 50571)
- For native RNA, combine with FlashGel™ loading dye (Cat # 50462)

## RNA & DNA Markers and Ladders for the FlashGel System



FlashGel™ DNA Marker 100 bp - 4 Kb 1.2%; 12+1 (Standard)  
 FlashGel™ QuantLadder 100 bp - 1.5 Kb 1.2%; 12+1 (Quantitation)  
 FlashGel™ DNA Marker 50 bp - 1.5 Kb 2.2%; 12+1 (High Concentration)  
 FlashGel™ DNA Marker 100 bp - 3 Kb 1.2%; 16+1 (Double-tier)  
 FlashGel™ RNA Marker 0.5 Kb - 9 Kb 1.2%; 12+1 & 16+1 (RNA)

Cat #	Description
50473	FlashGel™ DNA Marker 100 bp - 4 Kb (500µl)
50475	FlashGel™ DNA QuantLadder 100 - 1500 bp (250µl)
57033	FlashGel™ DNA Marker 50 bp - 1.5 Kb (500µl)
57034	FlashGel™ DNA Marker 100 bp - 3 Kb (500µl)
50577	FlashGel™ RNA Marker 0.5 kb - 9 Kb



**Contact us for a demo now!**

**Lonza**